

Job Name: _____ Location: _____
Purchaser: _____
Engineer: _____
Submitted To: _____ For: Reference Approval Construction
Submitted By: _____ Date: _____
Unit Designation: Schedule #: _____ Model No.: _____

Capacities & Efficiencies:

System	Combined with	Nominal Cooling Capacity	EER	SEER	Nominal Heating Capacity	COP	Low Heating Capacity	COP	HSPF
		Btu/hr	95F		Btu/hr	47F	Btu/hr	17F	
2MXS18GVJU	Non Ducted Indoor Unit	18,000	12.6	19.5	22,000	3.40	13,500	2.70	9.2
	Ducted Indoor Unit	16,000	9.0	13.0	22,000	2.90	13,100	2.20	7.70
	Mixed Ducted and Non Ducted Indoor Unit	17,000	10.8	16.3	22,000	3.15	13,300	2.45	8.5

CTXS09GVJU Indoor Unit:

Power Supply (V/Ph/Hz) from 2MXS	208-230/1/60
Cooling Airflow Rate (H/M/L)	388/335/283 cfm
Heating Airflow Rate (H/M/L)	400/357/314 cfm
Running Current (Rated) Cool / Heat	0.18 Amps / 0.20 Amps
Weight	20 lbs
Sound Pressure Level at 3.3ft (H/M/L)	44/40/35

FDXS09DVJU Indoor Unit:

Power Supply (V/PH/Hz) from 2MXS	208-230/1/60
Cooling Airflow Rate (H/M/L)	305/280/260 cfm
Heating Airflow Rate (H/M/L)	305/280/260 cfm
Running Current (Rated)	0.52 Amps
Weight	47 lbs
Sound Pressure Level at 3.3 ft (H/M/L)	35/33/31 dBA

Outdoor Unit:

Power Supply (V/PH/Hz)	208-230/1/60
Cooling Operating Range	14°F – 115°F DB
Heating Operating Range	5°F WB - 59.9°F WB 5°F DB - 72°F DB
Minimum Circuit Amps (MCA)	11.1 Amps
Maximum Fuse Amps (MFA)	20 Amps
Maximum Starting Current	8.3 Amps
Running Current (Cooling/Heating)	7.70 Amps / 9.60 Amps
Weight	139 lbs
Sound Pressure Level at 3.3 ft (H)	51 dB(A)

Piping:

Maximum Height Difference	49.2 ft
Maximum Length (Per Unit)	164 ft (82 ft)
Minimum Piping Length	9.8 ft
Liquid Piping Connection (OD)	φ1/4" x2
Gas Piping Connection (OD)	φ3/8" x2
Condensate Drain Piping Connection (OD)	φ11/16"

Standard Features:

U.S. Compressor Limited Warranty	7 years
U.S. Parts Limited Warranty	5 years
U.S. Limited Labor Warranty	1 year
Wireless Remote Control	Standard

Options:

Air Purifying Filter with Photo-catalytic Deodorizing Function	
Centralized Control/Unified On-Off/Scheduled Timer	

R-410A

INVERTER



CTXS09GVJU



FDXS09DVJU



2MXS18GVJU



Certified System Performance Data:

Cooling [60Hz 230V]

Combination of indoor unit	Type of indoor unit		Capacity of each indoor unit								
			Capacity (kBTU/h)		Total capacity (kBTU/h)		Total input (W)		Total current (A)		Power factor (%)
			A room	B room	Rating	(min ~ max)	Rating	(min ~ max)	Rating	(min ~ max)	Rating
09+09	CTXS	CTXS	9.00	9.00	18.00	6.70 ~ 19.00	1420	350 ~ 1700	6.2	1.5 ~ 7.5	99
09+09	CTXS	FDXS	8.50	8.50	17.00	6.40 ~ 17.50	1600	420 ~ 1750	7.0	1.8 ~ 7.7	99
09+09	FDXS	FDXS	8.00	8.00	16.00	6.10 ~ 16.10	1760	490 ~ 1800	7.7	2.2 ~ 7.9	99

Heating [60Hz 230V]

Combination of indoor unit	Type of indoor unit		Capacity of each indoor unit								
			Capacity (kBTU/h)		Total capacity (kBTU/h)		Total input (W)		Total current (A)		Power factor (%)
			A room	B room	Rating	(min ~ max)	Rating	(min ~ max)	Rating	(min ~ max)	Rating
09+09	CTXS	CTXS	11.00	11.00	22.00	8.20 ~ 24.00	1880	530 ~ 1970	8.3	2.3 ~ 8.7	99
09+09	CTXS	FDXS	11.00	11.00	22.00	8.10 ~ 23.60	2080	580 ~ 2130	9.1	2.5 ~ 9.4	99
09+09	FDXS	FDXS	11.00	11.00	22.00	8.00 ~ 23.20	2190	640 ~ 2290	9.6	2.8 ~ 10.1	99

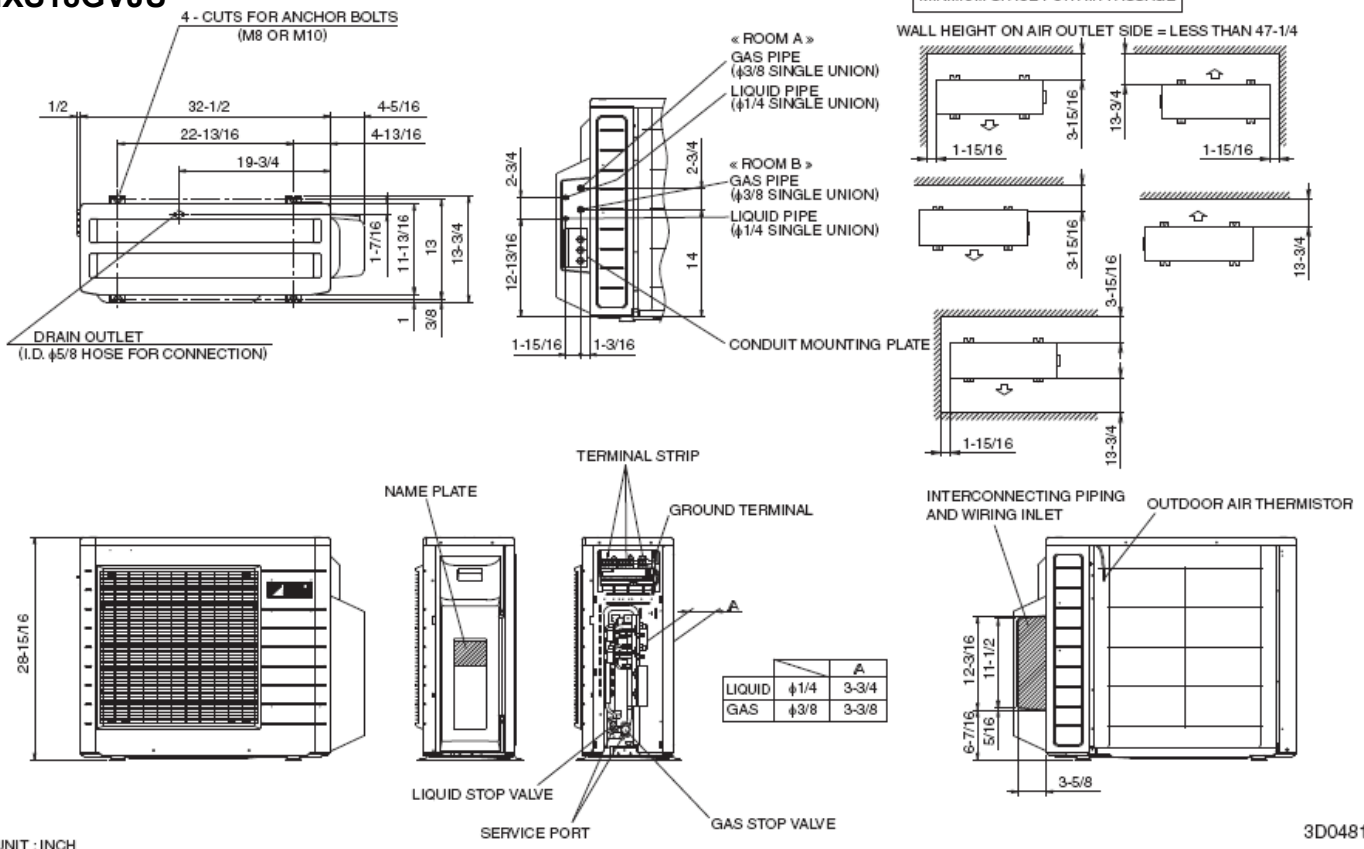
Note: 1. The data listed is based on the following conditions: -

Condition	Cooling	Heating	Piping Length
Indoor	80°FDB/67°F	70°FDB/60°FWB	25ft
Outdoor	95°FDB/75°FWB	47°FDB/43°FWB	



Condensing Unit Dimensions:

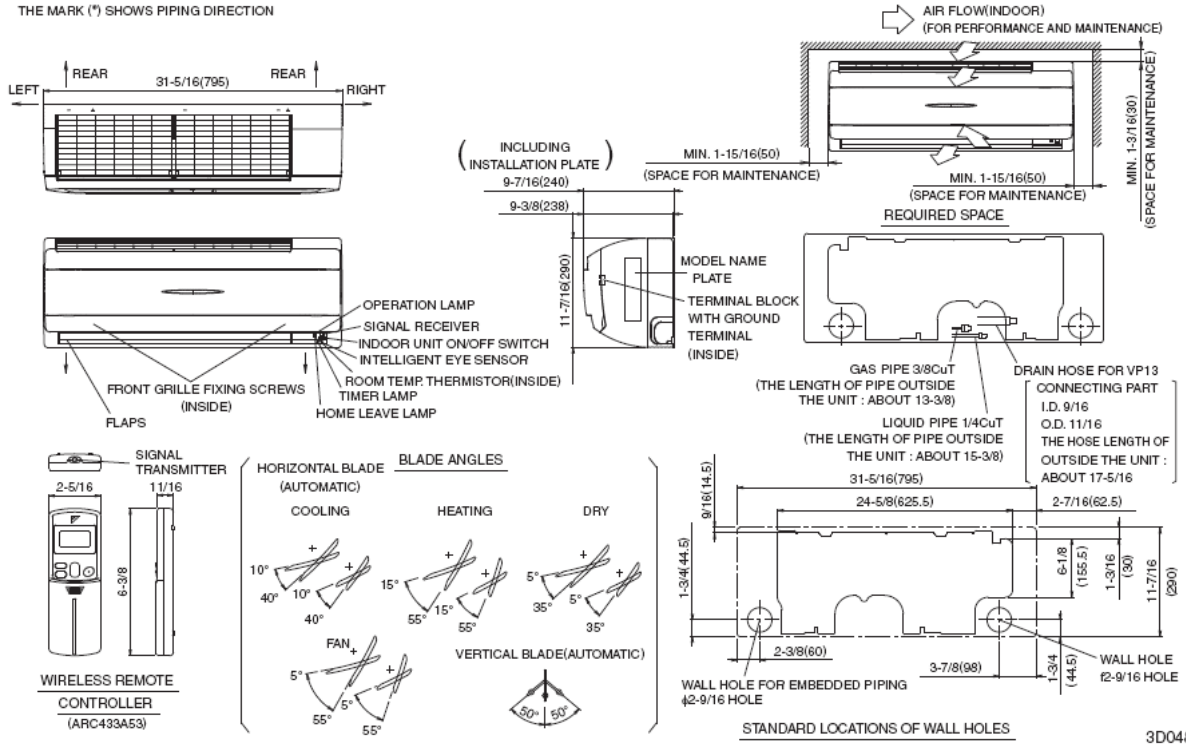
2MXS18GVJU



Indoor Fan Coil Unit Dimensions:

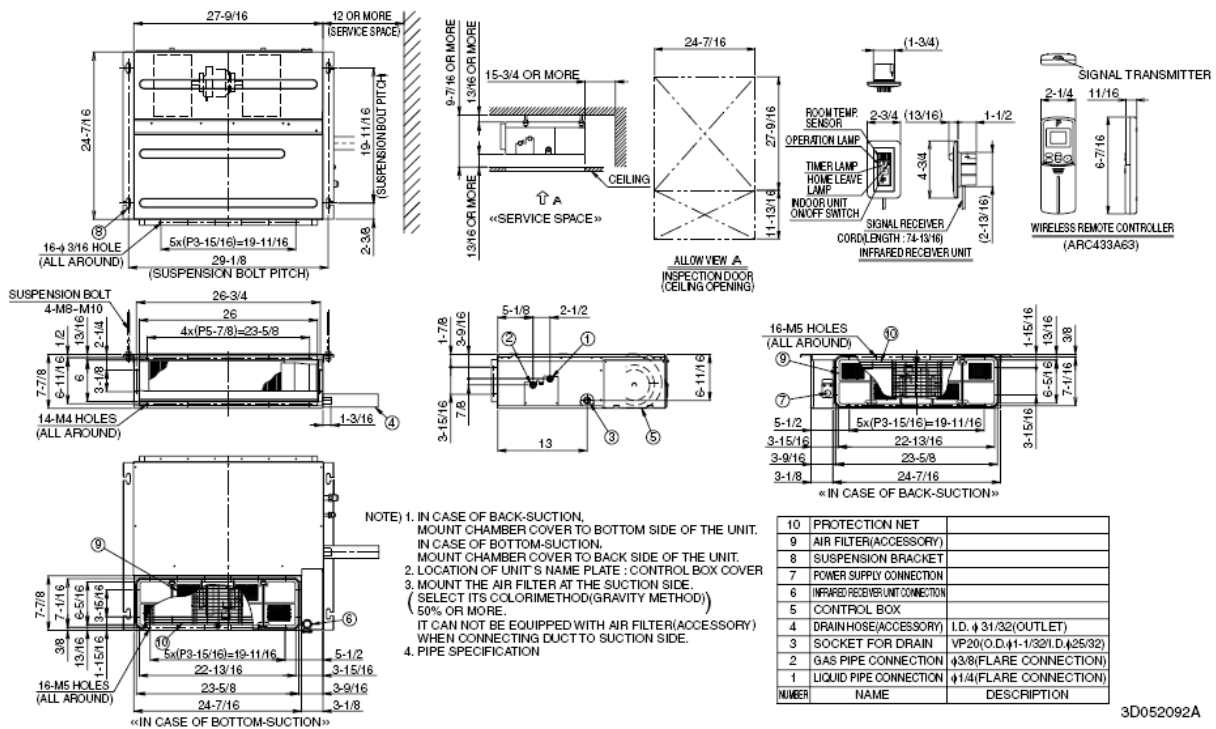
CTXS09GVJU – 0.75-Ton Wall Mount Type Indoor Unit

THE MARK (*) SHOWS PIPING DIRECTION



3D04:

FDXS09DVJU – 0.75-Ton Slim Duct Built In Type Indoor Unit



3D052092A